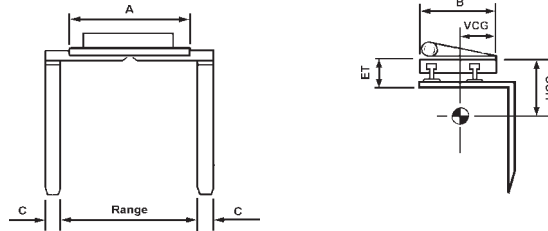


T11R Series Rotating Hydraulic Fork Clamp



Hydraulic Requirements: Double function auxiliary kit

Model No.	Capacity @ 24" LC	Range Inside Forks	Fork Length	Mtg	Weight	ET	HCG	VCG	A	B	C
T11-25-36R	2500	20 - 62	36	II	1032	13	8.7	10.2	36	21	4
T11-25-42R	2500	20 - 62	42	II	1052	13	9.4	10.0	36	21	4
T11-25-48R	2500	20 - 62	48	II	1073	13	10.2	9.8	43	21	4
T11-35-36R	3500	20 - 62	36	II	1194	12	8.1	10.1	36	26	4
T11-35-42R	3500	20 - 62	42	II	1214	12	8.7	9.9	36	26	4
T11-35-48R	3500	20 - 62	48	II	1235	12	9.4	9.8	36	26	4
T11-50-36R	5000	20 - 72	36	III	1591	14	8.8	12.4	43	31	5
T11-50-42R	5000	20 - 72	42	III	1617	14	9.4	12.2	43	31	5
T11-50-48R	5000	20 - 72	48	III	1642	14	10.0	12.0	43	31	5
T11-50-54R	5000	20 - 72	54	III	1668	14	11.8	11.8	43	31	5
T11-65-42R	6500	20 - 76	42	IV	2416	14	9.8	14.7	48	37	6
T11-65-48R	6500	20 - 76	48	IV	2446	14	10.3	14.6	48	37	6
T11-65-54R	6500	20 - 76	54	IV	2477	14	10.9	14.4	48	37	6
T11-65-60R	6500	20 - 76	60	IV	2507	14	11.5	14.2	48	37	6

Forks open and close equally and clamp rotates through 360 degrees

Things we need to know...

- ✓ Weight of Load
- ✓ Max. Width of Load
- ✓ Load
- ✓ Min. Width of Load
- ✓ Height of Load
- ✓ Length of Load
- ✓ Length of Fork
- ✓ Forklift Capacity
- ✓ Degrees of Rotation