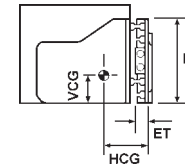
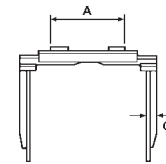


T32B Series Basic General Purpose Hydraulic Clamp



Model No.	Capacity @ 24" LC	Range Inside Arms	Arm Length	Arm Height	Mtg	Weight	Load			Forklift Capacity		
							ET	HCG	VCG	A	B	C
T32-25-30-18B	2500	22 - 64	30	18	II	857	4.4	7.2	10.4	36	21.0	2.13
T32-25-36-18B	2500	22 - 64	36	18	II	870	4.4	7.7	10.4	36	21.0	2.13
T32-25-30-24B	2500	22 - 64	30	24	II	878	4.4	7.5	10.6	36	21.0	2.13
T32-25-36-24B	2500	22 - 64	36	24	II	896	4.4	8.1	10.7	36	21.0	2.13
T32-25-30-30B	2500	22 - 64	30	30	II	900	4.4	7.8	11.0	36	21.0	2.13
T32-25-36-30B	2500	22 - 64	36	30	II	922	4.4	8.5	11.1	36	21.0	2.13
T32-25-30-36B	2500	22 - 64	30	36	II	922	4.4	8.1	11.6	36	21.0	2.13
T32-25-36-36B	2500	22 - 64	36	36	II	948	4.4	8.9	11.7	36	21.0	2.13
T32-35-30-18B	3500	21 - 63	30	18	II	924	4.8	6.6	11.1	36	23.0	2.00
T32-35-36-18B	3500	21 - 63	36	18	II	937	4.8	7.0	11.1	36	22.6	2.00
T32-35-42-18B	3500	21 - 63	42	18	II	950	4.8	7.4	11.1	36	22.6	2.00
T32-35-30-24B	3500	21 - 63	30	24	II	945	4.8	6.8	11.4	36	22.6	2.00
T32-35-36-24B	3500	21 - 63	36	24	II	963	4.8	7.3	11.4	36	23.0	2.00
T32-35-42-24B	3500	21 - 63	42	24	II	980	4.8	7.8	11.4	36	23.0	2.00
T32-35-30-30B	3500	21 - 63	30	30	II	967	4.8	7.0	11.7	36	22.6	2.00
T32-35-36-30B	3500	21 - 63	36	30	II	989	4.8	7.5	11.8	36	22.6	2.00
T32-35-42-30B	3500	21 - 63	42	30	II	1010	4.8	8.2	11.9	36	23.0	2.00
T32-35-30-36B	3500	21 - 63	30	36	II	989	4.8	7.2	12.2	36	22.6	2.00
T32-35-36-36B	3500	21 - 63	36	36	II	1015	4.8	7.8	12.3	36	22.6	2.00
T32-35-42-36B	3500	21 - 63	42	36	II	1040	4.8	8.1	12.5	36	23.0	2.00
T32-35-30-42B	3500	21 - 63	30	42	II	1010	4.8	7.3	12.8	36	22.6	2.00
T32-35-36-42B	3500	21 - 63	36	42	II	1040	4.8	8.6	13.0	36	22.6	2.00
T32-35-42-42B	3500	21 - 63	42	42	II	1071	4.8	8.9	13.2	36	23.0	2.00



Model No.	Capacity @ 24" LC	Range Inside Arms	Arm Length	Arm Height	Mtg	Weight	Load			Forklift Capacity		
							ET	HCG	VCG	A	B	C
T32-50-30-18B	5000	23 - 74	30	18	II/III	1197	5.5	5.1	12.3	43	25.0	2.00
T32-50-36-18B	5000	23 - 74	36	18	II/III	1210	5.5	5.4	12.3	43	25.0	2.00
T32-50-42-18B	5000	23 - 74	42	18	II/III	1223	5.5	5.8	12.2	43	25.0	2.00
T32-50-48-18B	5000	23 - 74	48	18	II/III	1236	5.5	6.2	12.2	43	25.0	2.00
T32-50-30-24B	5000	23 - 74	30	24	II/III	1218	5.5	5.3	12.5	43	25.0	2.00
T32-50-36-24B	5000	23 - 74	36	24	II/III	1236	5.5	5.7	12.5	43	25.0	2.00
T32-50-42-24B	5000	23 - 74	42	24	II/III	1253	5.5	6.1	12.5	43	25.0	2.00
T32-50-48-24B	5000	23 - 74	48	24	II/III	1270	5.5	6.7	12.4	43	25.0	2.00
T32-50-30-30B	5000	23 - 74	30	30	II/III	1240	5.5	5.4	12.7	43	25.0	2.00
T32-50-36-30B	5000	23 - 74	36	30	II/III	1262	5.5	5.9	12.8	43	25.0	2.00
T32-50-42-30B	5000	23 - 74	42	30	II/III	1283	5.5	6.5	12.8	43	25.0	2.00
T32-50-48-30B	5000	23 - 74	48	30	II/III	1305	5.5	7.1	12.8	43	25.0	2.00
T32-50-30-36B	5000	23 - 74	30	36	II/III	1262	5.5	5.6	13.1	43	25.0	2.00
T32-50-36-36B	5000	23 - 74	36	36	II/III	1288	5.5	6.2	13.2	43	25.0	2.00
T32-50-42-36B	5000	23 - 74	42	36	II/III	1313	5.5	6.8	13.3	43	25.0	2.00
T32-50-48-36B	5000	23 - 74	48	36	II/III	1339	5.5	7.5	13.4	43	25.0	2.00
T32-50-30-42B	5000	23 - 74	30	42	II/III	1283	5.5	5.8	12.8	43	25.0	2.00
T32-50-36-42B	5000	23 - 74	36	42	II/III	1313	5.5	6.4	12.9	43	25.0	2.00
T32-50-42-42B	5000	23 - 74	42	42	II/III	1344	5.5	7.1	13.0	43	25.0	2.00
T32-50-48-42B	5000	23 - 74	48	42	II/III	1374	5.5	7.8	13.0	43	25.0	2.00

Things we need to know...



Weight of Load



Load



Load



Height of Load



Max. Width of



Min. Width of



Type of Product



Length of Load



Forklift Capacity