

T46 Load Inverter with Platens and Adjustable Forks

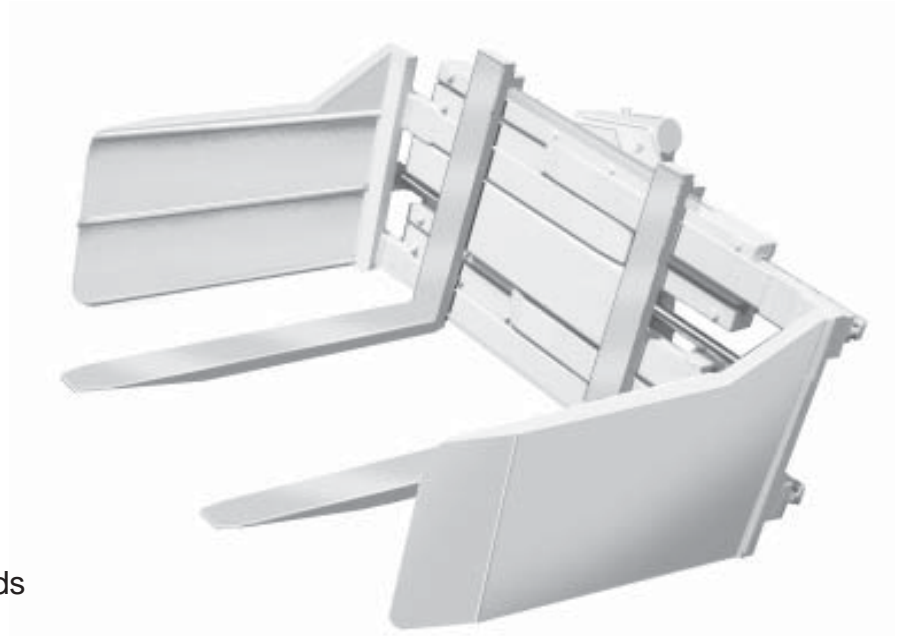
safe transfer of heavy loads from unstable containers

Features

Adjustable side platens to support load during rotation
360 degrees rotation
Forged fork blades
Self centering hydraulic cylinders
Steel / alloy frame construction

Options

Stationary load inverter with power pack
180 degrees rotation
Special ranges and capacities
Rubber faced general purpose pads



Total Load Inverters are designed for hydraulically transferring various palletized products from one pallet to another without manually lifting individual cases or bags for re-stacking.

Each load inverter is manufactured with adjustable side platens for retaining the load during rotation, and movable lower forks to support the load at other times. When clamped together the load is secured between the platens and can then be inverted through 180 degrees, transferring the product from one container to another. By reversing the rotation and unclamping the platens, the empty container can now be placed in its desired location for future use.

Total Load Inverters are simple to install on any forklift truck allowing the operator to hydraulically transfer products from one container to another from the safety of the drivers seat.

Transfer heavy loads without destroying containers!



Total Attachments Inc.

Tel: 905 -339-1100 **N. America**

Toll Free: 1-800-387-4638

Tel: + 44 1728 723221 **Europe**

Fax: 905-339- 2802

Email: sales@total.net

Website: www.total.net