

# T46 Load Inverter with Platens and Fixed Forks

safe transfer of heavy loads from unstable containers

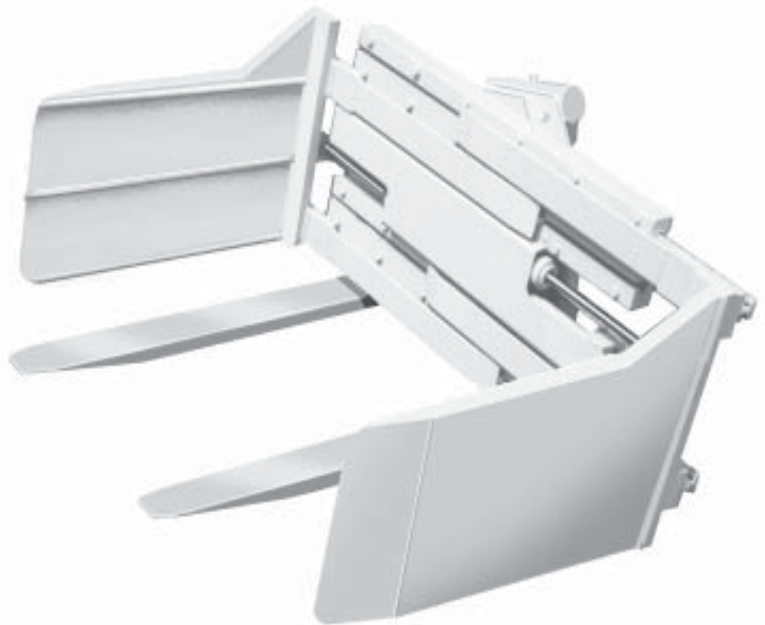
---

## Features

Adjustable side platens to support load during rotation  
360 degrees rotation  
Forged fork blades  
Self centering hydraulic cylinders  
Steel / alloy frame construction

## Options

Stationary load inverter with power pack  
180 degrees rotation  
Special ranges and capacities  
Rubber faced general purpose pads



**T46 Series Load Inverters** are designed for hydraulically transferring various palletized products from one pallet to another without manually lifting individual cases or bags for re-stacking.

Each load inverter is manufactured with adjustable side platens for retaining the load during rotation, and movable lower forks to support the load at other times. When clamped together the load is secured between the platens and can then be inverted through 180 degrees, transferring the product from one container to another. By reversing the rotation and unclamping the platens, the empty container can now be placed in its desired location for future use.

Total Load Inverters are simple to install on any forklift truck allowing the operator to hydraulically transfer products from one container to another from the safety of the drivers seat.

**Transfer heavy loads without destroying containers!**



**Total Attachments Inc.**

Tel: 905 -339-1100 N. America

Toll Free: 1-800-387-4638

Tel: + 44 1728 723221 Europe

Fax: 905-339- 2802

Email: [sales@total.net](mailto:sales@total.net)

Website: [www.total.net](http://www.total.net)