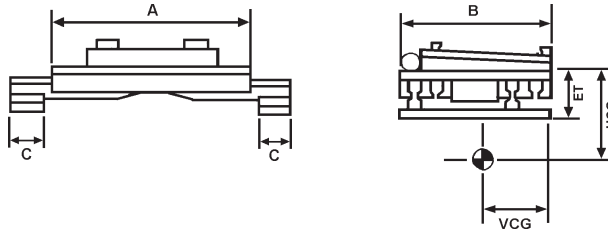


T7R Series Rotating Hydraulic Clamp



Hydraulic Requirements: Double function auxiliary kit

Model No.	Capacity @ 24" LC	Range Inside Arms	Mtg	Weight	Hydraulic Requirements			Dimensions		
					ET	HCG	VCG	A	B	C
T7-35-20-62R	3500	20 - 62	II	1022	10.8	6	10.9	36	22.6	4
T7-50-20-72R	5000	20 - 72	III	1367	12.0	7	13.3	43	25.1	5
T7-65-20-76R	6500	20 - 76	III	2084	12.9	8	15.7	48	31.0	6

Arms open and close equally and clamp rotates through 360 degrees

Maximum Pressure

2250 psi (150 bar)

Recommended Flow

6 gpm (27 litres)

Optional Auxiliary Hydraulics

- 3 way pressure reducing valve
- Variable pressure reducing valve
- Pressure gauge
- Quick disconnect couplings

Things we need to know...

- ✓ Weight of Load
- ✓ Width of Load
- ✓ Height of Load
- ✓ Length of Load
- ✓ Bolt on or Weld on Arms
- ✓ Bolt on or Weld on Forks
- ✓ Forklift Capacity
- ✓ Degrees of Rotation