

T9K Knife Edge Appliance Clamp

the safest, most reliable method of handling
consistently sized and closely stacked appliances

Models available

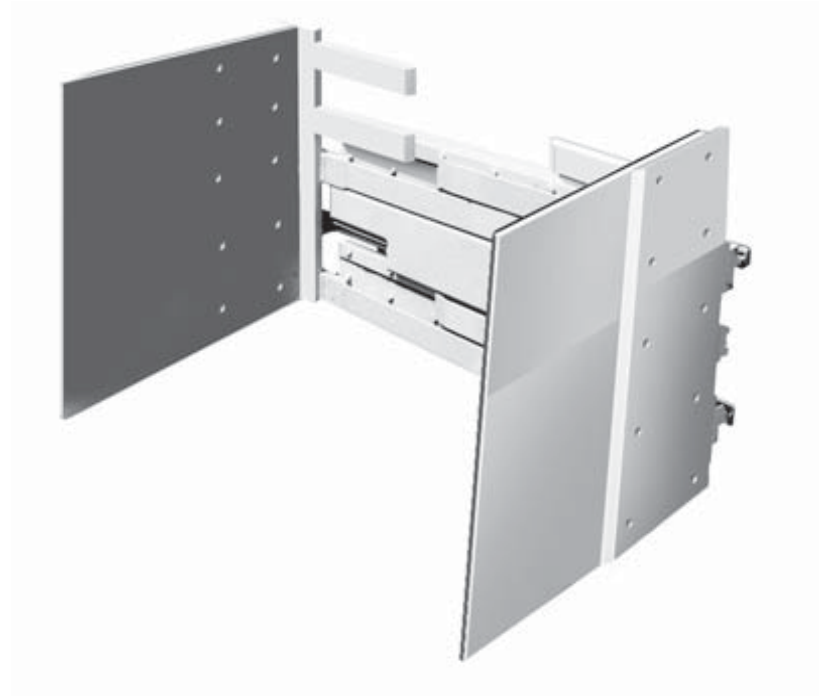
Standard sideshifting
Extra wide range - for double handling

Options

Numerous ranges and capacities
Special pad sizes
Quick disconnect mounting

Features

Rigid, vulcanized, rubber faced aluminum
pads bolted to thin steel load arms
Two piece floating slide bushings
Self aligning hydraulic cylinders
Light weight slide rail construction
Full width load backrest



Total Knife Edge Appliance Clamps are used extensively for clamping and lifting closely stacked pallet-less products such as refrigerators, washers and dryers.

The frames of these clamps are constructed from both steel and alloy for a maximum strength to weight ratio. The slim, rigid pads are front tapered to squeeze effortlessly between closely stacked loads.

Vulcanized rubber faced pads are designed to gently handle various products stored in confined areas, while also reducing damage significantly. Warehouse space can be utilized to the fullest when using this versatile clamp.

Secure clamping without product damage!



Total Attachments Inc.

Tel: 905 -339-1100 N. America

Toll Free: 1-800-387-4638

Tel: + 44 1728 723221 Europe

Fax: 905-339- 2802

Email: sales@total.net

Website: www.total.net